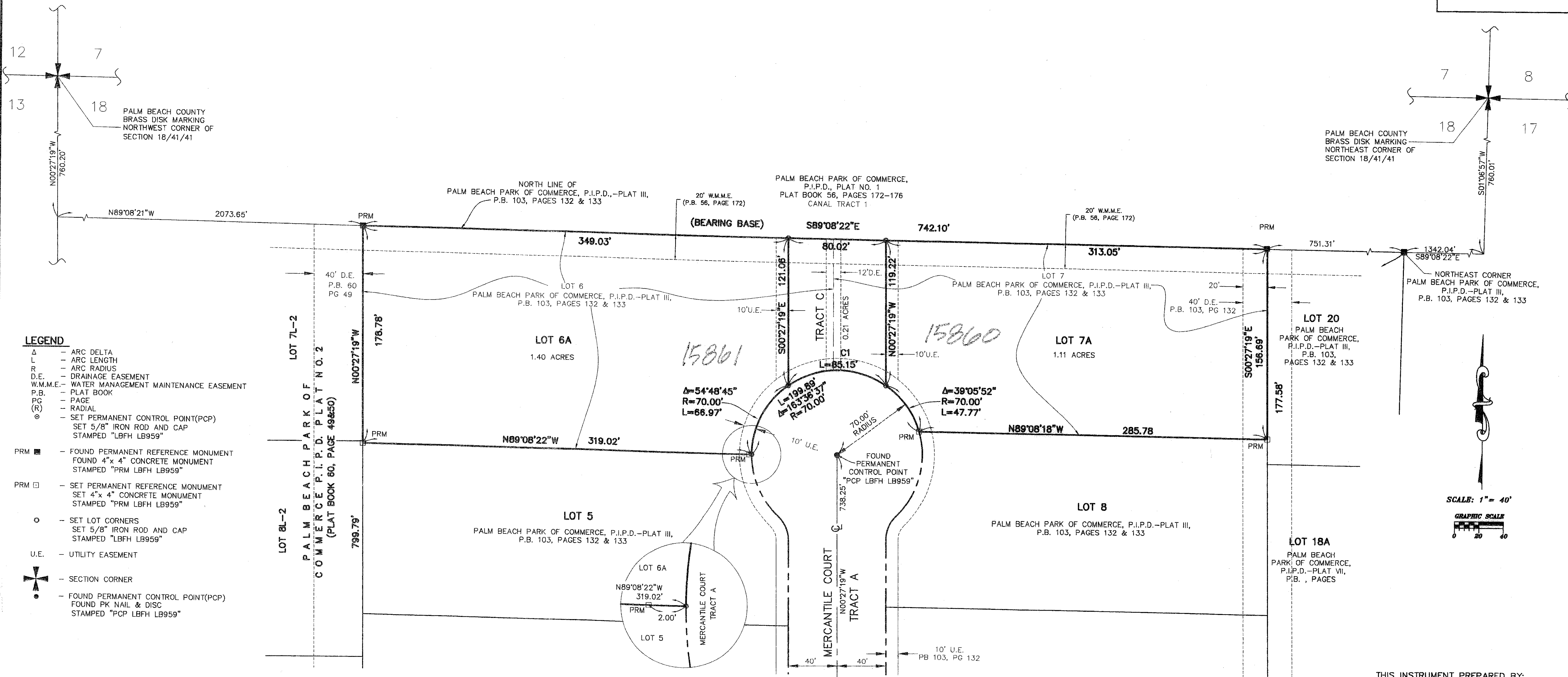


# PALM BEACH PARK OF COMMERCE, P.I.P.D. - PLAT X

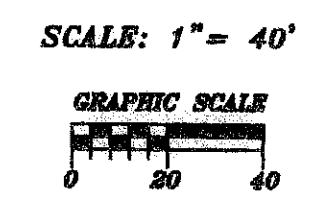
A REPLAT OF LOTS 6 AND 7, PALM BEACH PARK OF COMMERCE, P.I.P.D.- PLAT III,  
 RECORDED IN PLAT BOOK 103, PAGES 132 AND 133, PUBLIC RECORDS OF PALM BEACH COUNTY, FLORIDA.  
 LYING IN SECTION 18, TOWNSHIP 41 SOUTH, RANGE 41 EAST, PALM BEACH COUNTY, FLORIDA



- LEGEND**
- Δ - ARC DELTA
  - L - ARC LENGTH
  - R - ARC RADIUS
  - D.E. - DRAINAGE EASEMENT
  - W.M.M.E. - WATER MANAGEMENT MAINTENANCE EASEMENT
  - P.B. - PLAT BOOK
  - PAGE - PAGE
  - PC - RADIAL
  - - SET PERMANENT CONTROL POINT (PCP)
  - - SET 5/8" IRON ROD AND CAP STAMPED "LBFH LB959"
  - PRM ■ - FOUND PERMANENT REFERENCE MONUMENT FOUND 4"x 4" CONCRETE MONUMENT STAMPED "PRM LBFH LB959"
  - PRM □ - SET PERMANENT REFERENCE MONUMENT SET 4"x 4" CONCRETE MONUMENT STAMPED "PRM LBFH LB959"
  - - SET LOT CORNERS SET 5/8" IRON ROD AND CAP STAMPED "LBFH LB959"
  - U.E. - UTILITY EASEMENT
  - ✚ - SECTION CORNER
  - - FOUND PERMANENT CONTROL POINT (PCP) FOUND PK NAIL & DISC STAMPED "PCP LBFH LB959"

**CURVE TABLE**

#	DELTA	RADIUS	LENGTH
C1	Δ=69°41'59"	R=70.00'	L=85.15'



THIS INSTRUMENT PREPARED BY:  
 RICHARD H. SMITH  
 PROFESSIONAL SURVEYOR AND MAPPER  
 FLORIDA LICENSE NUMBER 5239  
 FOR  
 L.B.F.H., INC.  
 CONSULTING ENGINEERS, SURVEYORS & MAPPERS  
 3550 S.W. CORPORATE PARKWAY  
 PALM CITY, FLORIDA 34990  
 LB-959

**lbfh** CONSULTING CIVIL ENGINEERS, SURVEYORS & MAPPERS  
 INC. "Partners For Results. Value By Design."  
 3550 S.W. Corporate Parkway, Palm City, Florida 34990  
 (772) 286-3863 Fax: (772) 286-3925  
 BPR & FBPE License No: 959 www.lbfh.com

SUBDIVISION: PALM BEACH PARK OF COMMERCE PL. 10  
 BOOK: 103 PAGE: 132  
 BLOCK: 103 BLOOMINGDALE 50 B  
 ZONING: P.I.P.D.  
 QUAD: 71  
 SE  
 TAX: 920  
 PUB NAME: